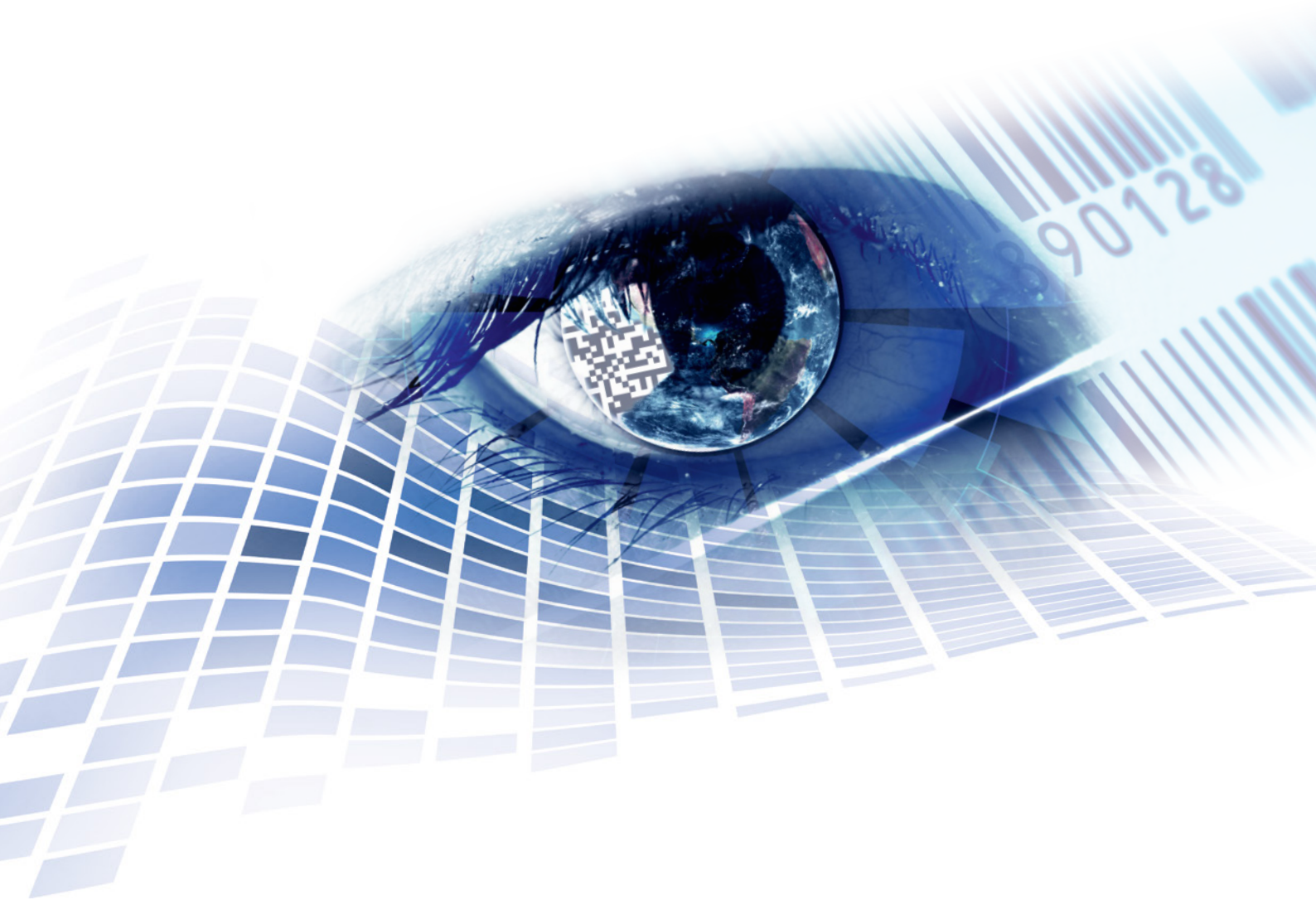


LABEL PRINTERS

Perfection in product labelling



labeling visions
everything . is . possible

Contents

Micra II	Appealing design and compact overall size	Page 4 . 5
Pica II	High reliability in second generation	Page 6 . 7
Vita V	More flexibility. More efficiency. More reliability	Page 8 . 9
Compa V	High versatility in a new look	Page 10 . 11
Vario V	Mid-range label printer	Page 12 . 13
Spectra II	Highspeed performance in second generation	Page 14 . 15

Micra II

Appealing design and compact overall size



Highlights

- > Cost-effective entry-level printers for small print volumes
- > Thermal direct or thermal transfer print
- > Print width up to 105.7 mm
- > Ethernet, serial and USB port
- > Double sensor system

Options

- > "Guillotine" and "Rotation" cutter unit
- > Dispenser unit with photocell
- > External label unwinder

Rotation cutter unit



Dispenser unit



External label unwinder



	Micra II 104/8	Micra II 106/12
Printing		
Print resolution	203 dpi	300 dpi
Print speed	max 130 mm/s	max 100 mm/s
Print width	max 104 mm	max 105.7 mm
Passage width	max 118 mm	max 118 mm
Printhead	Flat Type	Flat Type
Labels		
Adhesive labels, continuous labels	rolls: paper, cardboard, textile, synthetics	
Material weight	min 0.06 mm / max 0.25 mm	
Label width	min 25 mm	
Label height Standard Cutter mode / dispenser mode	max 12 mm max 25 mm	
Label height	max 1727 mm	762 mm
Roll diameter	max 127 mm	
Core diameter	25.4 mm / 38.1 mm / 76.2 mm	
Winding	outside or inside	
Label sensor	below transmission and reflexion	
Transfer Ribbons		
Ink	outside	
Core diameter	25.4 mm / 1"	
Roll diameter	max Ø 68 mm	
Length	max 300 m	
Width	max 110 mm	
Fonts		
Font types	6 bitmap fonts 6 proportional fonts more fonts on demand	
Bar Codes		
1D bar codes	2/5 Industrial, Codabar, Code 128, Code 128A, Code 128B, Code 2/5 Interleaved, Code 39, Code 39 extended, Code 93, EAN 13, EAN 8, EAN Add-on, GS1-128, Identcode, ITF 14, Leitcode, Pharmacode, PLANET (Postal Alpha Numeric Encoding Technique), PostNet, PZN 7, PZN 8, UPC-A, UPC-E, USPS Intelligent Mail	
2D bar codes	Aztec Code, CODABLOCK F, DataMatrix, GS1 DataMatrix, MAXICODE, PDF 417, QR Code	
GS1 bar codes	GS1 DataBar Expanded, GS1 DataBar Limited, GS1 DataBar Omnidirectional, GS1 DataBar Stacked, GS1 DataBar Truncated	
Dimensions		
width x height x depth	285 x 171 x 226 mm	
Weight		
Weight	2.72 kg	
Interfaces		
Serial	RS-232C (max 115,200 baud)	
USB	2.0 High Speed Slave	
Ethernet	10/100 Base T, LPD, RawIP-Printing, DHCP	
Operating Conditions		
Nominal voltage	label printer: 100 ... 240 V AC / 50 - 60 Hz portable power supply: 24 V DC	
Power	max 60 VA	
Operating temperature	5 ... 40 °C	
Relative humidity	max 85 % (non-condensing)	
Operation panel		
LED	Two-color status LED: Ready and Status	
Taste	function key: Feed	

Pica II

High reliability in second generation



Highlights

- > Stable metal housing for industrial applications
- > Small footprint for applications with limited space
- > Serial, parallel and USB port
- > Display for comfortable operation
- > Cover with viewing window

Options

- > LAN and WLAN 802.11 b/g interface
- > Guillotine cutter unit
- > Dispenser unit
- > Dispenser I/O
- > External label rewinder

Guillotine cutter unit



Dispenser unit



External label rewinder



	Pica II 104/8	Pica II 106/12	Pica II 103/8 T	Pica II 108/12 T
Printing				
Print resolution	200 dpi	300 dpi	203 dpi	300 dpi
Print speed	max 100 mm/s	max 100 mm/s	max 100 mm/s	max 100 mm/s
Print width	max 104 mm	max 105.7 mm	max 104 mm	max 108.4 mm
Passage width	max 110 mm	max 110 mm	max 110 mm	max 110 mm
Printhead	Flat Type ²	Flat Type ²	Flat Type ¹	Flat Type ¹
Labels				
Adhesive labels, continuous labels	rolls or fan-fold: paper, cardboard, textile, synthetics			
Material weight	max 220 g/m ² (larger on demand)			
Label width	min 15 mm			
Label height Standard Cutter mode/dispenser mode	min 6 mm min 15 mm			
Label height Standard Ethernet (option)	max 750 mm max 650 mm	max 750 mm max 650 mm	max 650 mm max 450 mm	max 650 mm max 450 mm
Roll diameter internal unwinder internal rewinder	max 180 mm -			
Core diameter	40 mm / 75 mm (option)			
Winding	outside or inside			
Label sensor Standard Option	transmission top transmission and reflexion / bottom transmission and reflexion			
Transfer Ribbons (for thermal transfer printer only)				
Ink	outside / inside (option)			
Core diameter	25.4 mm / 1"			
Roll diameter	max Ø 70 mm			
Length	max 300 m			
Width	max 110 mm			
Fonts				
Font types	6 bitmap fonts 8 vector fonts/TrueType fonts 6 proportional fonts more fonts on demand			
Bar Codes				
1D bar codes	2/5 Industrial, Codabar, Code 128, Code 128A, Code 128B, Code 2/5 interleaved, Code 39, Code 39 extended, Code 93, EAN 13, EAN 8, EAN Add-on, GS1-128, Identcode, ITF 14, Leitcode, Pharmacode, PLANET (Postal Alpha Numeric Encoding Technique), PostNet, PZN 7, PZN 8, UPC-A, UPC-E, USPS Intelligent Mail			
2D bar codes	Aztec Code, CODABLOCK F, DataMatrix, GS1 DataMatrix, MAXICODE, PDF 417, QR Code			
GS1 bar codes	GS1 DataBar Expanded, GS1 DataBar Limited, GS1 DataBar Omnidirectional, GS1 DataBar Stacked, GS1 DataBar Stacked Omnidirectional, GS1 DataBar Truncated			
Dimensions				
width x height x depth	230 x 230 x 350 mm			
Weight				
Weight	9 kg			
Interfaces				
Serial	RS-232C (max 115,200 baud)			
Parallel	Centronics (SPP)			
USB	2.0 High Speed Slave			
Ethernet (option)	10/100 Base T, LPD, RawIP-Printing, DHCP, HTTP, FTP			
WLAN (option)	module 802.11 b/g/n WEP, WPA, WPA-PSK, WPA2, WPA2-PSK, EAP			
Operating Conditions				
Nominal voltage	110 ... 230 V AC/50-60 Hz - 2 A 115 V AC/50-60 Hz - 3 A (option) voltage adjustment by an internal voltage selector pre-adjustment 230 V AC			
Power	max 150 VA			
Operating temperature	5 ... 35 °C			
Relative humidity	max 80 % (non-condensing)			

¹ = Flat Type for thermal direct . ² = Flat Type for thermal transfer

Vita V

More flexibility. More efficiency. More reliability



Highlights

- > Graphic display with white background lighting
- > Serial, LAN and USB port
- > Print resolution: 200 dpi, 300 dpi and 600 dpi
- > Slot for SD card
- > Double sensor system

Options

- > Guillotine cutter unit
- > Dispenser unit
- > Dispenser I/O
- > External label rewinder

Guillotine cutter unit



Dispenser unit



External label rewinder



	Vita V 103/8 T	Vita V 104/8	Vita V 106/12	Vita V 106/24	Vita V 108/12 T
Printing					
Print resolution	203 dpi	203 dpi	300 dpi	600 dpi	300 dpi
Print speed	max 200 mm/s	max 200 mm/s	max 150 mm/s	max 100 mm/s	max 150 mm/s
Print width	max 104 mm	max 104 mm	max 105.7 mm	max 105.7 mm	max 108.4 mm
Passage width Standard Cutter mode/dispenser mode	max 116 mm max 112 mm	max 116 mm max 112 mm	max 116 mm max 112 mm	max 116 mm max 112 mm	max 116 mm max 112 mm
Printhead	Flat Type ¹	Flat Type ²	Flat Type ²	Flat Type ²	Flat Type ¹
Labels					
Adhesive labels, continuous labels	rolls or fan-fold; paper, cardboard, textile, synthetics				
Material weight	max 220 g/m ² (larger on demand)				
Label width	min 12 mm				
Label height Standard Cutter mode/dispenser mode	min 5 mm min 15 mm				
Label height	max 6000 mm	max 6000 mm	max 3000 mm	max 1000 mm	max 3000 mm
Roll diameter internal unwinder internal rewinder	max 180 mm -				
Core diameter	40 mm / 75 mm (option)				
Winding	outside or inside				
Label sensor	bottom transmission and reflexion				
Transfer Ribbons					
Ink	outside or inside				
Core diameter	25.4 mm / 1"				
Roll diameter	max Ø 80 mm				
Length	max 450 m				
Width	max 110 mm				
Fonts					
Font types	6 bitmap fonts 8 vector fonts/TrueType fonts 6 proportional fonts more fonts on demand				
Bar Codes					
1D bar codes	2/5 Industrial, Codabar, Code 128, Code 128A, Code 128B, Code 2/5 interleaved, Code 39, Code 39 extended, Code 93, EAN 13, EAN 8, EAN Add-on, GS1-128, Identcode, ITF 14, Leitcode, Pharmacode, PLANET (Postal Alpha Numeric Encoding Technique), PostNet, PZN 7, PZN 8, UPC-A, UPC-E, USPS Intelligent Mail				
2D bar codes	Aztec Code, CODABLOCK F, DataMatrix, GS1 DataMatrix, MAXICODE, PDF 417, QR Code				
GS1 bar codes	GS1 DataBar Expanded, GS1 DataBar Limited, GS1 DataBar Omnidirectional, GS1 DataBar Stacked, GS1 DataBar Stacked Omnidirectional, GS1 DataBar Truncated				
Dimensions					
width x height x depth	236 x 238 x 374 mm				
Weight					
Weight	11 kg				
Interfaces					
Serial	RS-232C (max 115,200 baud)				
USB	2.0 High Speed Slave				
Ethernet	10/100 Base T, LPD, RawIP-Printing, DHCP, HTTP, FTP				
2 x USB Host	on the back for: keyboard, USB memory stick				
Operating Conditions					
Nominal voltage	110 ... 240 V AC/50 - 60 Hz				
Power	400 VA				
Nominal current	4 A				
Operating temperature	5 ... 35 °C				
Relative humidity	max 80 % (non-condensing)				

¹ = Flat Type for thermal direct . ² = Flat Type for thermal transfer

Compa V

High versatility in a brand new look



Highlights

- > Large label rolls with a diameter up to 205 mm
- > Print speed up to 300 mm/s
- > Easy to operate and maintain
- > Graphic display with white background lighting
- > Serial, LAN and USB port
- > Slot for SD card
- > Stand-alone mode
- > Double sensor system

Options

- > Rotation cutter unit
- > Dispenser unit
- > Dispenser I/O
- > Internal rewinder
- > External label rewinder
- > Pneumatic applicator

Rotation cutter unit



Dispenser unit



External label rewinder



	Compa V 103/8	Compa V 104/8	Compa V 106/12	Compa V 106/24	Compa V 108/12	Compa V 162/12
Printing						
Print resolution	203 dpi	203 dpi	300 dpi	600 dpi	300 dpi	300 dpi
Print speed (max)	300 mm/s	300 mm/s	300 mm/s	150 mm/s	300 mm/s	250 mm/s
Print width (max)	104 mm	104 mm	105.7 mm	105.6 mm	108.4 mm	162.6 mm
Passage width (max)	120 mm	120 mm	120 mm	120 mm	120 mm	180 mm
Printing principle	TT/TD ¹	TT ²	TT ²	TT ²	TT/TD ¹	TT/TD ¹
Labels						
Labels, continuous rolls or fan-fold	paper, cardboard, textile, synthetics					
Material weight (max)	max. 220 g/m ² (larger on demand)					
Label width (min)	20 mm					46 mm
Liner width (min)	25 mm					50 mm
Label height (min)	5 mm					
Standard Cutter/dispenser mode	15 mm					25 mm
Label height (max)	6000 mm					
Standard Dispenser mode	6000 mm	6000 mm	3000 mm	750 mm	3000 mm	2000 mm
Dispenser mode	200 mm	200 mm	200 mm	200 mm	200 mm	200 mm
Roll diameter (max)	205 mm					
Core diameter	Ø 40 mm					
Standard Additional dimensions	Ø 38.1 up to Ø 76 mm (optional additional cores possible)					
Winding	outside or inside					
Label sensor	transmission and reflexion from below					
Transfer ribbon						
Ink	outside or inside					
Core diameter	25.4 mm / 1"					
Roll diameter (max)	Ø 90 mm					
Length (max)	600 m					
Width (max)	114 mm					170 mm
Internal rewinder for printers						
Outside diameter	142 mm					
Core diameter	Ø 40 mm					
Winding	outside					
Fonts and bar codes						
Font types	6 bitmap Fonts 8 vector fonts/TrueType fonts 6 proportional fonts other fonts on demand					
1D bar codes	2/5 Industrial, Codabar, Code 128, Code 128A, Code 128B, Code 2/5 interleaved, Code 39, Code 39 extended, Code 93, EAN 13, EAN 8, EAN Add-on, GS1-128, Identcode, ITF 14, Leitcode, Pharmacode, PLANET (Postal Alpha Numeric Encoding Technique), PostNet, PZN 7, PZN 8, UPC-A, UPC-E, USPS Intelligent Mail					
2D bar codes	Aztec Code, CODABLOCK F, DataMatrix, GS1 DataMatrix, MAXICODE, PDF 417, QR Code					
GS1 bar codes	GS1 DataBar Expanded, GS1 DataBar Limited, GS1 DataBar Omnidirectional, GS1 DataBar Stacked, GS1 DataBar Stacked Omnidirectional, GS1 DataBar Truncated					
Dimensions						
Width x height x depth (mm)	252 x 288 x 460					312 x 288 x 460
Weight	10 kg					14 kg
Interfaces						
Serial	RS-232C (bis 115.200 Baud)					
USB	2.0 High Speed Slave					
Ethernet	10 / 100 Base T, LPD, RawIP-Printing, DHCP					
2 x USB Host	on the back for: keyboard, USB memory stick					
Operating data						
Power supply	110 ... 240 V AC / 50 - 60 Hz					
Max. power consumption	200 VA					
Nominal current	2.5 A					
Operating temperature	5 ... 35 °C					
Relative humidity	max. 85 % (non-condensing)					

¹ = Thermal transfer / thermal direct . ² = Thermal transfer

Vario V

Mid-range label printer



Highlights

- > 7" Touch-screen display
Variant with LCD graphic display & foil keyboard¹
- > Internal rewinder (max Ø 100 mm)
- > Serial, LAN and USB port
- > Unicode-compliant for multilingual applications
- > Stand-alone mode
- > Insertion for Compact Flash card

Options

- > Dispenser I/O
- > Guillotine cutter unit
- > Dispenser unit

¹ These are two independent printers.

Guillotine cutter unit



Dispenser unit



Touch-screen display



	Vario V 103/8 T	Vario V 104/8	Vario V 107/12	Vario V 107/24	Vario V 108/12 T
Printing					
Print resolution	203 dpi	203 dpi	300 dpi	600 dpi	300 dpi
Print speed	max 250 mm/s	max 250 mm/s	max 250 mm/s	max 100 mm/s	max 250 mm/s
Print width	max 104 mm	max 104 mm	max 105.7 mm	max 105.7 mm	max 108.4 mm
Passage width	max 110 mm	max 110 mm	max 110 mm	max 110 mm	max 110 mm
Printhead	Flat Type ¹	Flat Type ²	Flat Type ²	Flat Type ²	Flat Type ¹
Labels					
Adhesive labels, continuous labels	rolls or fan-fold: paper, cardboard, textile, synthetics				
Material weight	max 220 g/m ² (larger on demand)				
Label width	min 15 mm				
Label height Standard Cutter mode/dispenser mode	min 6 mm min 15 mm				
Label height	max 6000 mm	max 6000 mm	max 3000 mm	max 1000 mm	max 3000 mm
Roll diameter internal unwinder internal rewinder	max 200 mm max 100 mm				
Core diameter	40 mm / 75 mm (option)				
Winding	outside or inside				
Label sensor Standard Option	transmission top or bottom reflexion				
Transfer Ribbons					
Ink	outside or inside				
Core diameter	25.4 mm / 1"				
Roll diameter	max Ø 80 mm				
Length	max 450 m				
Width	max 110 mm				
Fonts					
Font types	6 bitmap fonts 8 vector fonts/TrueType fonts 6 proportional fonts more fonts on demand				
Bar Codes					
1D bar codes	2/5 Industrial, Codabar, Code 128, Code 128A, Code 128B, Code 2/5 Interleaved, Code 39, Code 39 extended, Code 93, EAN 13, EAN 8, EAN Add-on, GS1-128, Identcode, ITF 14, Leitcode, Pharmacode, PLANET (Postal Alpha Numeric Encoding Technique), PostNet, PZN 7, PZN 8, UPC-A, UPC-E, USPS Intelligent Mail				
2D bar codes	Aztec Code, CODABLOCK F, DataMatrix, GS1 DataMatrix, MAXICODE, PDF 417, QR Code				
GS1 bar codes	GS1 DataBar Expanded, GS1 DataBar Limited, GS1 DataBar Omnidirectional, GS1 DataBar Stacked, GS1 DataBar Stacked Omnidirectional, GS1 DataBar Truncated				
Dimensions					
width x height x depth	230 x 310 x 450 mm				
Weight					
Weight	15 kg				
Interfaces					
Serial	RS-232C (max 115,200 baud)				
USB	2.0 High Speed Slave				
Parallel	SPP				
2 x USB Host	on the back for: keyboard, USB memory stick				
Operating Conditions					
Nominal voltage	110 ... 240 V AC / 50 - 60 Hz				
Max. power consumption	350 VA				
Operating temperature	5 ... 35 °C				
Relative humidity	max 80 % (non-condensing)				

¹ = Flat Type for thermal direct . ² = Flat Type for thermal transfer

Spectra II

Highspeed performance in second generation



Highlights

- > 6.5" Touch-screen display
Variant with LCD graphic display & foil keyboard¹
- > Print speed up to 350 mm/s
- > Compact cover
- > Transfer ribbon saving

Options

- > Rotation cutter unit
- > Dispenser unit
- > Roll-to-Roll
- > Internal rewinder
- > External rewinder

¹ These are two independent printers.

Rotation cutter unit



Dispenser unit












Internal rewinder



	Spectra II 103/8 (104/8)	Spectra II 106/12	Spectra II 106/24	Spectra II 107/12	Spectra II 108/12	Spectra II 160/12	Spectra II 162/12	Spectra II 216/12
Printing								
Print resolution	200 dpi	300 dpi	600 dpi	300 dpi	300 dpi	300 dpi	300 dpi	300 dpi
Print speed	350 mm/s	350 mm/s	100 mm/s	350 mm/s	350 mm/s	300 mm/s	300 mm/s	200 mm/s
Print width	104 mm	105.7 mm	105.6 mm	106.6 mm	108.4 mm	160 mm	162.6 mm	216.8 mm
Passage width	116 mm	116 mm	116 mm	116 mm	116 mm	176 mm	176 mm	226 mm
Printhead	Flat Type ¹⁺²	Flat Type ²	Flat Type ²	Corner Type ²	Flat Type ¹⁺²	Corner Type ²	Flat Type ¹⁺²	Flat Type ¹⁺²
Labels								
Adhesive labels, continuous labels	rolls or fan-fold, paper, cardboard, textile, synthetics							
Material weight	max. 220 g/m ² (larger on demand)							
Label width	min 15 mm	min 15 mm	min 15 mm	min 15 mm	min 15 mm	min 50 mm	min 50 mm	min 100 mm
Label height	min 6 mm	min 6 mm	min 15 mm	min 6 mm	min 6 mm	min 15 mm	min 15 mm	min 15 mm
Cutter mode/dispenser mode	min 25 mm	min 25 mm	min 25 mm	min 25 mm	min 25 mm	min 25 mm	min 25 mm	min 25 mm
Label height	max 6000 mm	max 3000 mm	max 750 mm	max 3000 mm	max 3000 mm	max 2000 mm	max 2000 mm	max 1000 mm
Roll diameter	max 200 mm							
Internal unwinder	max 200 mm (option)							
Internal rewinder								
Core diameter	40 mm / 75 mm (option)							
Winding	outside or inside							
Label sensor	bottom transmission and reflexion							
Standard	top transmission and reflexion, ultrasonic photocell							
Option								
Transfer Ribbon								
Ink	outside or inside							
Core diameter	25.4 mm / 1"							
Roll diameter	max Ø 90 mm							
Length	max 450 m							
Width	max 110 mm	max 110 mm	max 110 mm	max 110 mm	max 110 mm	max 163 mm	max 170 mm	max 220 mm
Fonts								
Font types	6 bitmap fonts 8 vector fonts/TrueType fonts 6 proportional fonts other fonts on demand							
Bar Codes								
1D bar codes	2/5 Industrial, Codabar, Code 128, Code 128A, Code 128B, Code 2/5 interleaved, Code 39, Code 39 extended, Code 93, EAN 13, EAN 8, EAN Add-on, GS1-128, Identcode, ITF 14, Leitcode, Pharmacode, PLANET (Postal Alpha Numeric Encoding Technique), PostNet, PZN 7, PZN 8, UPC-A, UPC-E, USPS Intelligent Mail							
2D bar codes	Aztec Code, CODABLOCK F, DataMatrix, GS1 DataMatrix, MAXICODE, PDF 417, QR Code							
Composite bar codes	GS1 DataBar Expanded, GS1 DataBar Limited, GS1 DataBar Omnidirectional, GS1 DataBar Stacked, GS1 DataBar Stacked Omnidirectional, GS1 DataBar Truncated							
Dimensions								
width x height x depth	287 x 380 x 503 mm	287 x 380 x 503 mm	287 x 380 x 503 mm	287 x 380 x 503 mm	287 x 380 x 503 mm	337 x 380 x 503 mm	337 x 380 x 503 mm	387 x 380 x 503 mm
Weight								
Weight	19 kg	19 kg	19 kg	19 kg	19 kg	21 kg	21 kg	28 kg
Interfaces								
Serial	RS-232C (max 115,200 baud)							
Parallel	SPP							
USB	2.0 High Speed Slave							
Ethernet	10/100 Base T, LPD, RawIP-Printing, DHCP, HTTP, FTP							
WLAN (option)	module 802.11 b/g/n WEP, WPA, WPA-PSK, WPA2, WPA2-PSK, EAP							
Operating Conditions								
Nominal voltage	110 ... 230 V AC / 50-60 Hz							
Power	300 VA							
Nominal current	2.7 A							
Operating temperature	5 ... 35 °C							
Relative humidity	max 80 % (non-condensing)							

¹ = for thermal direct . ² = for thermal transfer

- Label applicator 
- Ribbon save 
- Bar code scanner 
- Thermal printhead 
- Touch panel 
- WLAN 
- Config Tool 
- Labelstar Office 
- Loftware 

Local retailer

Branches:

Sales office Bavaria

Marienplatz 8a . 83043 Bad Aibling
Phone +49 8061 3498888 . rstreck@carl-valentin.de

Sales office Spain

Calle historiador Vedia 14 5ªB . 15004 La Coruña
Phone +34 881 103163 . Mobile +34 609022241 . mllano@carl-valentin.es

Sales office Switzerland

Swiss Business Haus . Moosäckerstraße 75 . 8105 Regensdorf
Phone +41 61 9739641 . Mobile +41 79 7448436 . info@carl-valentin.ch



Carl Valentin GmbH
Neckarstraße 78–86 u. 94
78056 Villingen-Schwenningen
Phone +49 7720 9712-0
info@carl-valentin.de . www.carl-valentin.de

